



CS WIN8014

WORD Report Converter

Rel.1

Oct.2000

Installation of “WORD Report Converter”

Hardware requirements

For correct operations the application **WIN8014 –WINWORD Report Converter** needs a Personal Computer equipped with the following minimum hardware:

- ❑ CPU PENTIUM – 100 MHz;
- ❑ Monitor VGA colour or B/W (best results if set for 800 x 600 pixels);
- ❑ Memory 16 MB;
- ❑ HD with free space of 6 MB at least;
- ❑ Serial interface (COM1 or COM2) operating up to 19200 Baud;
- ❑ Cable CS X-112 (special serial cable with adapter 9 to 25 terminals - don't use standard cables. Communication between **CS8014** and PC will not work);
- ❑ Graphic serial or parallel printer;
- ❑ Windows 3.1, Windows 3.11 or for Workgroups installed, Windows 95 or Windows 98
- ❑ MS WORD 95, 98 or Office 2000.

Preparing the installation

Before installing the **WINWORD Report Converter**, you must verify if the **WIN8014** application is already installed in your computer with version 2.4.8 or later. You can verify that from the initial picture, shown below, where the release must be **2.4** and the compilation **08**.

Otherwise, you have to install the correct release

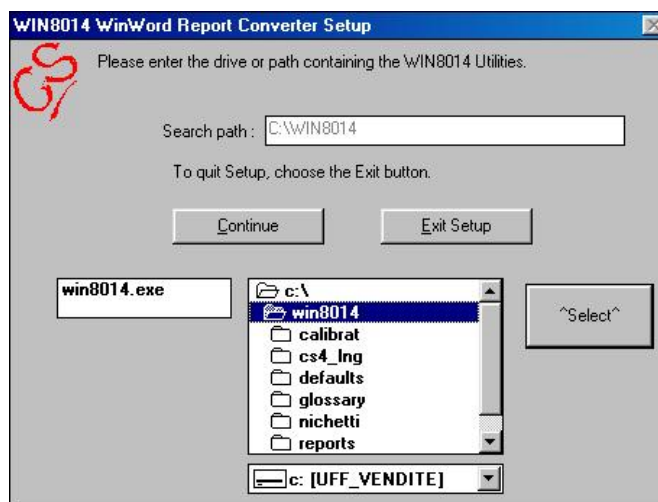


of **WIN8014** application, from the supplied diskettes or downloading the upgrade files from our WEB site: www.cs-strumentazione.com/company/support.htm.

Installation

Insert the supplied diskette named **WINWORD Report Converter** into drive A:, then run **A:\setup.exe** program.

A dialog panel, as below, appears. You have to locate the directory where is already installed the **WIN8014** application, then press “Select” and “Continue” buttons.



If the **WIN8014** application shall found, a panel advise you about the licence data.

After, a new dialog panel ask you to locate the **WinWord.exe** application.

Locate it, then press “Select” and “Continue” buttons. The installation program will run until



complete installation.

Some error messages can appears during the **WINWORD Report Converter** option.

- 1) The **WIN8014** application is a demo version:

Install a registered **WIN8014** application, version 2.4.8, then retry the **WINWORD Report Converter** installation.

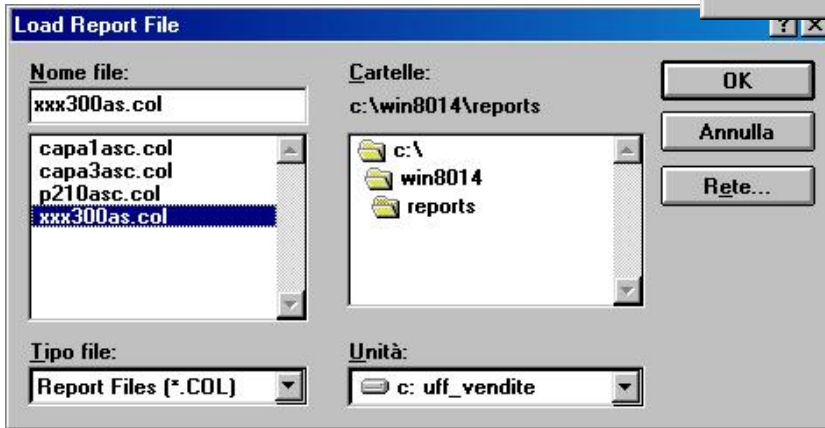
- 2) The **MS WORD (WinWord.exe)** version is too old:

Install a most recent version, as reported in the Hardware requirement list.

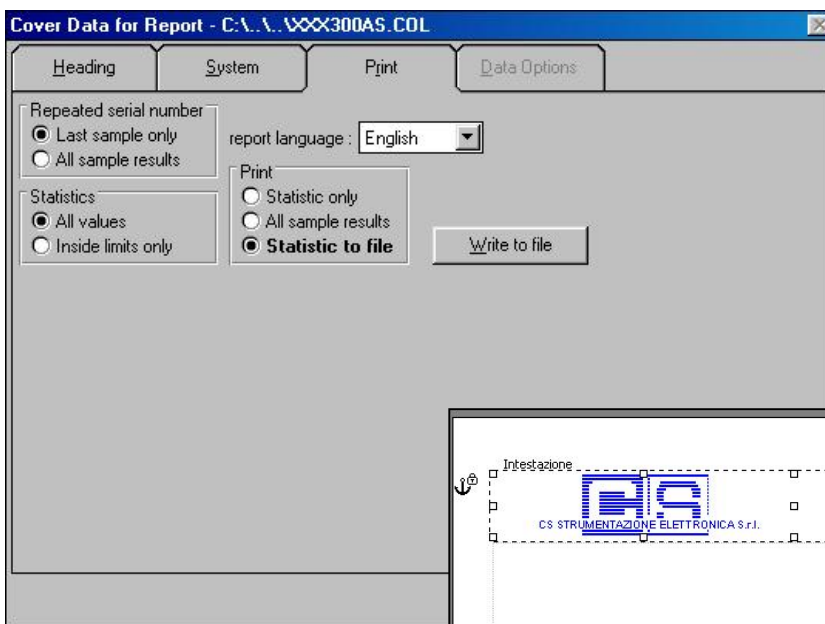
Use of Report Converter inside WIN8014

After an happy-end installation, you can run, as usually, your **WIN8014** application.

Select the “Print”/”Report” menu. Then select the report file to be converted , trough the dialog box as



shown below.



A panel like the following is now displayed.

In the “Print” Tab, first select the language then “Statistic to file” option. To start the report conversion press “Write to file”. button.

The conversion run-up and two text files - *.crt and *.stt - are produced in the same directory where you have found the original report file.

Now, starts the creation of a true MS WORD document. **WinWord.exe** is opened and a picture shown in first page is displayed to notify you that the conversion of your document is in progress.

The end of the document conversion is notified by



the following message.

You have to press OK, then close the “Cover Data Report” in **WIN8014** application. Now save new document. After, you can edit it, insert additional documents, commentaries, or other modification to complete a true Test Report.

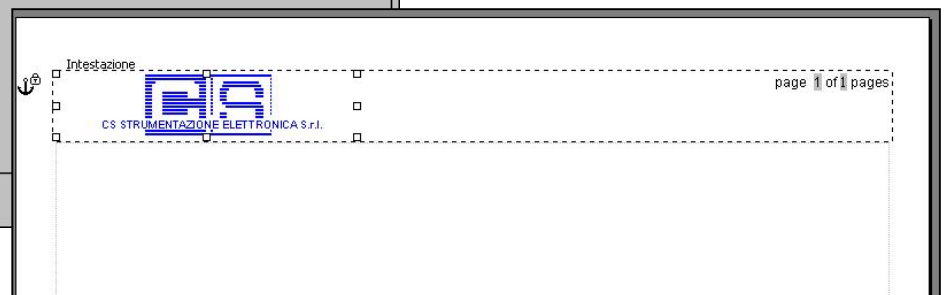
Tricks and suggestions

1. *Changes of Report Logo.*

If you want to insert your own Logo as heading of your document, follow the above instructions:

1.1. Open the file **Cert8014.dot**. (you can find it into the same directory of the **WIN8014** Application).

Take care, you must open the template, not a new document! For this, select the file, click the right mouse button, then



select **Open** (not **New**).

1.2. When opened, double click on the **CS** Logo. The header section will be opened. Now select again the **CS** Logo picture and substitute it with your own Logo. Take care: Save the modified template USING THE SAME FILE NAME IN THE ORIGINAL DIRECTORY !

1.3. Now, you open the file **Stat8014.dot** and substitute the **CS** Logo with yours, using the same procedure above described.

Notes: